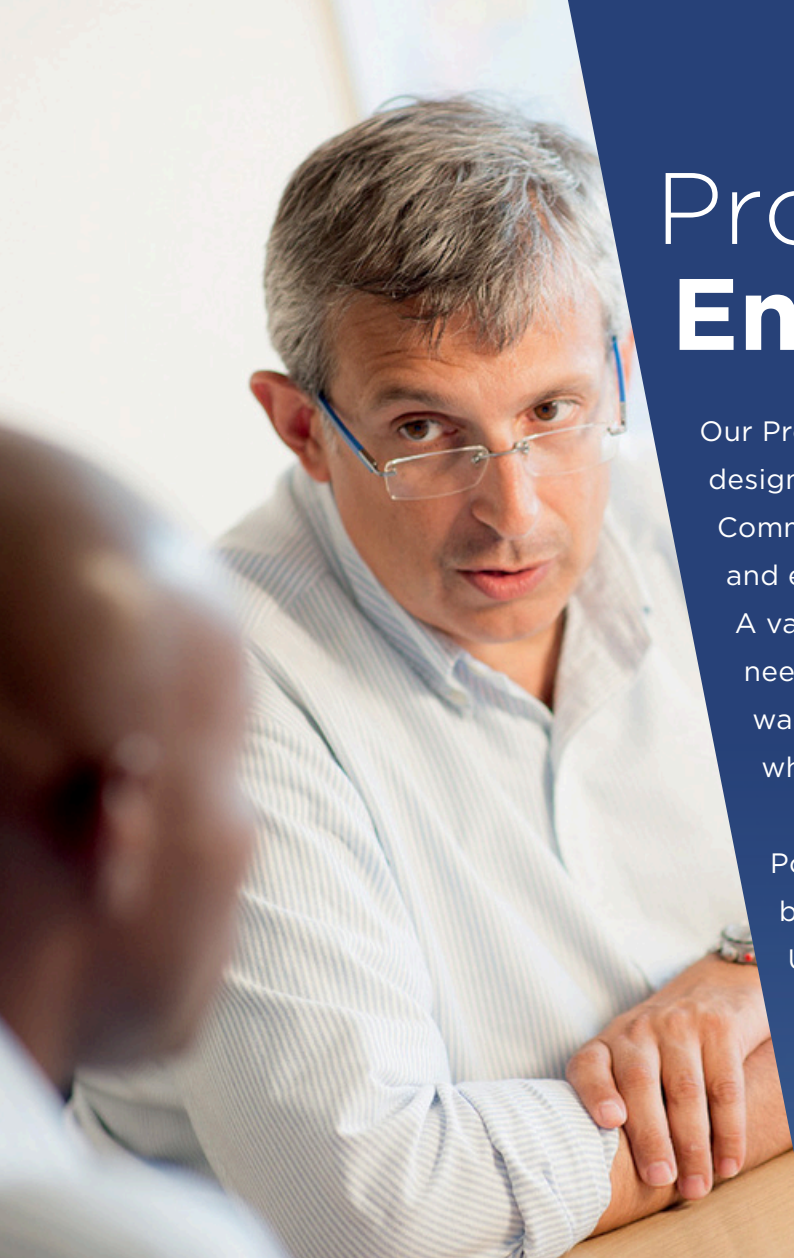


# Professional **English & Golf**



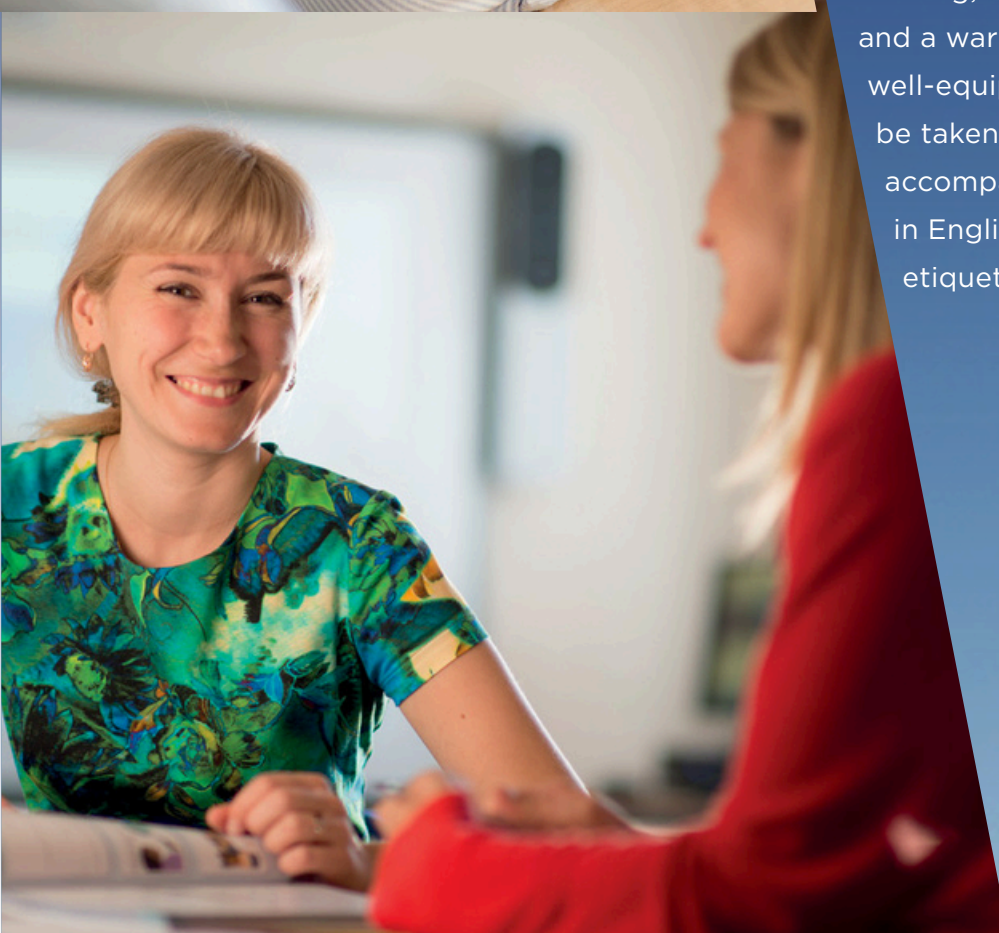
**LSI PORTSMOUTH**  
International House  
Portsmouth



# Professional English and Golf

Our Professional English plus Golf programmes are designed to combine focused Professional Communications training with the practice, language, and etiquette of golf in the country that invented the game. A variety of programme options are designed to suit a range of needs, from the relative beginner to the serious player wanting to improve their social communication skills while playing golf in the beautiful English countryside.

Portsmouth is strategically located on England's beautiful South Coast, surrounded by some of the United Kingdom's most renowned golf courses, with over 20 within a 20-km radius of the city. Whether the course is in the picturesque South Downs or on the Solent coast, they offer 18 holes from par-3 to par-5, full equipment rental services, a club professional for those wanting personal golf coaching, a totally English-speaking environment, and a warm and friendly welcome to guest players in well-equipped and elegant club-houses. Clients will be taken to the club by our golf companion, who will accompany them throughout the round, conversing in English and instructing in the areas of golf etiquette and vocabulary.



# Programme Options

English and Golf programmes are available from the beginning of April to the end of September (make enquires for specific dates). In the event of bad weather suitable alternative activities will be organised, involving cultural activities and/or sightseeing.

## Option G-1 Plus: Full-day Individual English tuition & Golf

Monday to Friday: Five full days of individual language and communications training with a round of golf following training on Tuesday, Wednesday and Thursday. Approximately 43 hours of trainer contact, including golf companion. On golf days, participants will be occupied from 08.30 until 19.30 approximately, and from 08:30 - 16:00 on Monday and Friday.

Cost: £2630 per week, including registration, golf companion, green fees and return travel to golf courses.

## Option G-2: Half-day Individual English tuition & Golf

Monday to Friday: Five mornings and two afternoons (Monday and Friday) of individual language and communications training with three afternoons of golf from 13:30 - 16:30. Approximately 35 hours of trainer contact, including golf companion.

Cost: £2100 per week, including registration, golf companion, green fees and return travel to golf courses.

## Option G-3 Plus: Full-day Individual and Group English Tuition & Golf

Monday to Friday: Five full days of language and communications training. Half-day Individual 1-1 training and half-day in an Executive Open Group with a maximum of 4 international participants with a round of golf following training on Tuesday, Wednesday and Thursday.

Approximately 43 hours of trainer contact, including golf companion. On golf days, participants will be occupied from 08.30 until 19.30 approximately, and from 08:30 - 16:00 on Monday and Friday.

Cost: £2130 per week, including registration, golf companion, green fees and return travel to golf courses. Please note that charges do not include shoe or club hire. This is available at a small extra charge (approx. £15-£20) from the golf clubs.

## Accommodation

Accommodation is available either in one of LSI / IH's Executive Homestays or in a hotel; Executive Homestay accommodation is £300 a week for single room, breakfast and evening meal.

## Hotels

There are a variety of hotels in Portsmouth which can be booked by LSI / IH. However, the charges must be paid directly to the hotel.

## Airport Transfers

We are able to organise taxi transfers to and from all major airports, including Heathrow, Gatwick, London Stansted, Luton, London City, and Southampton.

## Trainer-accompanied lunch

Tutor accompanied lunches are available to book at £100 per week.



## Personal details

Surname: \_\_\_\_\_  
 First Names: \_\_\_\_\_  
 Gender: \_\_\_\_\_  
 Nationality: \_\_\_\_\_  
 Passport Number: \_\_\_\_\_  
 Date of Birth: \_\_\_\_\_  
 Contact Tel: \_\_\_\_\_  
 Email Address: \_\_\_\_\_

## Employment / Invoice Details

Name of Company/Organisation: \_\_\_\_\_  
 Tel: \_\_\_\_\_  
 Email: \_\_\_\_\_

What type of work is your company involved in?  
 \_\_\_\_\_  
 \_\_\_\_\_

Job Title: \_\_\_\_\_  
 Department: \_\_\_\_\_

Please write a very brief description of your job:  
 \_\_\_\_\_  
 \_\_\_\_\_  
 \_\_\_\_\_

## Course options

Please tick the programme you require:  
 **Option G-1 Plus:** Full day individual  
 **Option G-2:** Individual programme  
 **Option G-3 Plus:** Group/Individual Combination Plus  
 Course Dates: from: \_\_\_\_\_ to: \_\_\_\_\_  
 Course Duration: \_\_\_\_\_  
 Golf Handicap: \_\_\_\_\_  
 Number of years playing golf? \_\_\_\_\_

## Trainer Accompanied Lunch

Enjoy lunch accompanied by one of the English language trainers from our school - Monday to Friday - £100 per week  
 **Trainer-accompanied lunch**

## Accommodation

Accommodation is normally available from the Sunday; i.e. the day before the course commences:

Type required - Please tick as appropriate:

Executive Homestay  Hotel

Do you smoke?: \_\_\_\_\_

Do you have any particular preferences concerning homestay accommodation; i.e. size of family, age, children, pets, hobbies/interests?  
 \_\_\_\_\_  
 \_\_\_\_\_

## Arrival details

Date and time \_\_\_\_\_

Flight Number \_\_\_\_\_

Airport \_\_\_\_\_

Do you require a taxi transfer? Please tick:

Not required  Yes, One-Way  Yes, Return

## Current Level of English

	Very Good	Good	Inter-mediate	Weak	Very Weak
Speaking					
Listening					
Reading					
Writing					

## Course Objectives

Please summarise briefly what you would like to achieve during your course at LSI / IH Portsmouth, indicating which language skills you would most like to improve?  
 \_\_\_\_\_  
 \_\_\_\_\_  
 \_\_\_\_\_

Please number the 4 most important in order of priority:

### Speaking & Understanding

Meetings  Telephoning  
 Negotiating  Socialising / Entertaining  
 Presentations  Travelling  
 Selling  Cultural Awareness

### Reading & Writing

Emails  Contracts / Agreements  
 Reports  Instruction Manuals

How did you hear of LSI / IH Portsmouth?  
 \_\_\_\_\_  
 \_\_\_\_\_  
 \_\_\_\_\_