

# Cambridge CELTA Courses 2026



This information pack is designed for people interested in taking the Certificate in English Language Teaching to Adults (CELTA) at LSI/IH Portsmouth.

For any additional questions about the course, or to book a place, please contact the course director, Lewis Richards: [lewis.richards@lsi-portsmouth.co.uk](mailto:lewis.richards@lsi-portsmouth.co.uk) or call us on: 02392 291811

More information: [www.lsi.portsmouth.co.uk](http://www.lsi.portsmouth.co.uk)



Accredited by the  
 BRITISH COUNCIL  
for the teaching  
of English in the UK



+44 (0)2392291811



[lsi-portsmouth.co.uk](http://lsi-portsmouth.co.uk)



[info@lsi-portsmouth.co.uk](mailto:info@lsi-portsmouth.co.uk)



LSI/IH Portsmouth (Language Specialists International), 2-2A Isambard Brunel Road, Portsmouth, PO1 2DU

## What is a CELTA course?

The **Cambridge Assessment Certificate in English Language Teaching to Adults** is the most recognised initial English Language Teaching qualification in the world. It is a qualification that is trusted by employers, language schools and governments. It gives knowledge, confidence and hands-on teaching experience to those who would like to develop a successful career in teaching English as a Foreign Language. LSI/IH Portsmouth are proud to be an approved Cambridge English CELTA training centre (Centre No: 58534), and are keen to assist people in becoming qualified English language teachers with an internationally recognised certificate. CELTA is highly regarded both nationally and internationally and has been accredited at level 5 on the National Qualifications Framework.

### Key facts:

- English level required: C1+/C2
- Minimum age: 18
- Minimum course size: 6
- Maximum course size: 12
- Tutor to participant ratio: max. 1 to 6
- Course Length: 4 weeks
- Contact hours throughout the course: 120 hrs including teaching practice
- Deposit: £300 (non-refundable)
- Course fee: £1750 (£1550 course fee + £170 Cambridge fee)



### Who is the course for?

It is a course for native speakers or non-native speakers with a C1+/C2-level of English and is ideal for:

- recent graduates seeking a career in teaching English as a Foreign Language,
- current TEFL teachers without a formal qualification,
- experienced teachers in other fields who would like to move into EFL teaching,
- people who would like a career change.

No previous English language teaching experience is required to study for the CELTA qualification but you must be at least 18 and have a minimum English language level equivalent to C1+/C2 on the Common European Framework of Reference for Languages (CEFR). You'll also need an education level equivalent to that required for entry into higher education.

Upon successfully completing the 120-hour course, you will be ready to start working in a variety of EFL teaching contexts around the world.

## What is the course like?

The course is both theoretical and practical, focusing on principles underlying language teaching, syllabus design, classroom management, presenting new language, using resources and materials as well as assessing learners.

The CELTA is made up of instruction, teaching practice and reflection and contains the following components:

- input sessions on language awareness, student awareness, classroom management and lesson planning
- daily small group teaching practice with students at different language levels
- detailed feedback and discussion sessions with tutors
- observation of qualified teachers and your peers

### **The five main topics you will cover in the CELTA course are:**

- learners and teachers, and the teaching and learning context
- language analysis and awareness
- language skills: reading, listening, speaking and writing
- planning and resources for different contexts
- developing teaching skills and professionalism

### **By the end of the course, you will have:**

- acquired an understanding of English teaching methodology, theory and principles,
- developed classroom management skills,
- understood the key principles of language testing and assessment,
- become familiar with and assessed course books and tests,
- designed syllabi, lesson plans and tests,
- selected and designed appropriate teaching material,
- become familiar with strategies for presenting new language and dealing with pronunciation, acquired and practised strategies for teaching reading, speaking, listening and writing skills,
- observed live lessons taught by experienced teachers,
- and put the accumulated knowledge in practice through teaching real students in an actual classroom.



## Assessment, Attendance and Commitment:

Assessment is made on a continuous basis and there is no final exam. However, particular emphasis is given to teaching appropriate lessons effectively. Please note that your teaching practice is supervised and followed by detailed feedback, assessment and group evaluation.

In addition to the assessed teaching practice, the course also includes written assignments. You will be assessed regularly and kept up-to-date with your progress throughout the course during scheduled tutorial sessions. Final assessment is made on three main areas: Professional Development, Written Assignments and Teaching Practice.

To receive a CELTA certificate you will need to complete the course and meet the assessment criteria for all written and practical assignments. You will be assessed on 6 hours of teaching practice and 4 written assignments. There are three passing grades: Pass A, Pass B and Pass.

CELTA is a demanding and intensive course. You should be prepared to complete regular assignments and assessments and must have the disposition, potential and drive to become an effective teacher. Throughout the course you will need to spend a substantial amount of time on lesson preparation and written assignments outside of timetabled hours. This means that in addition to the 120 contact hours, you will have to work at least a further 120 hours in your own time in order to produce work of a 'pass' standard. 100% attendance is expected as due to the practical nature of the course there is little chance of making up time missed.

## Timetable of the course:

### **Full-time course:**

The full-time (4-week) course timetable is from 9am to 5pm, Monday to Friday. In the mornings you will have input sessions from the tutors on different areas and aspects of teaching, and in the afternoons you will be teaching volunteer students, followed by feedback on the teaching as a group, and time for guided lesson preparation. As mentioned above, you will need to spend a significant amount of time outside of the timetabled hours working on lesson plans, assignments and so on.

### **Typical timetable:**

09:00 - 11:30 Teaching Practice  
11:30 - 12:00 Morning break  
12:00 - 12:45 Feedback on Teaching Practice  
12:45 - 13:30 Lunch  
13:30 - 14:45 Input session 1 (Presenting Vocabulary)  
14:45 - 15:00 Afternoon break  
15:00 - 16:15 Input session 2 (Introduction to Phonology)  
16:15 - 17:00 Guided Lesson Planning

## Where does the course take place?

All sessions on the course take place at LSI Portsmouth. All the input sessions and teaching practice will take place in our classrooms, and you will have access to rooms to prepare lessons and work in, as well IT access, photocopying and access to our library and resources throughout.



## Enrolment information:

CELTA courses are regularly oversubscribed, so we strongly recommend applying as early as possible in order to avoid disappointment. Acceptance on to the CELTA is dependent on a successful application process which includes a language awareness task followed by an interview.

### **Application process:**

- Express your interest as soon as possible by completing the application form and pre-interview task.
- After receiving your completed form and task, we will respond to you within five working days to advise you of the results, and whether you were selected for the interview or not. Interviews can last up to 1 hour.

If you are accepted on the course, you will need to pay a deposit to secure your place. The deposit is non-refundable.

## Fees and payment:

A non-refundable deposit of £300 must be paid in order to secure a place on the course. The course fee for 2025/6 is £1750 (£1550 course fee + £170 Cambridge fee).

The deadline for payment will be sent in the email of confirmation. The balance of the course fees is due 3 weeks prior to the start date. We cannot guarantee to hold your place on the course unless all fees are paid in full 3 weeks before the course starts.

## About LSI/IH Portsmouth and the CELTA course:

LSI has been offering English language courses and language training in the centre of Portsmouth since 1985. We are currently ranked joint number one for EFL teaching in the UK according to the latest British Council reports. We teach students from all over the world a range of courses, as well as offering teacher-training courses, such as the CELTA and the distance DELTA. Our tutors are all highly-experienced trainers, with a history of EFL publications, conference presentations, and hold DELTA and Masters' qualifications in EFL.

In 2019, we joined the International House group of schools. International House World Organisation is a group of English language schools across the world whose focus is on teaching excellence, and teacher-training. International House has been running CELTA courses for many decades, and we are pleased to be part of such a high-quality teacher-training organisation. You can read more about International House World Organisation: <https://ihworld.com/about/>

## Accommodation in Portsmouth:

If you require accommodation in Portsmouth during your CELTA course, our Accommodation department will be happy to help you find a suitable LSI host family, or help you book your own accommodation in the city. You can find more information [here](#).

## CELTA course dates:

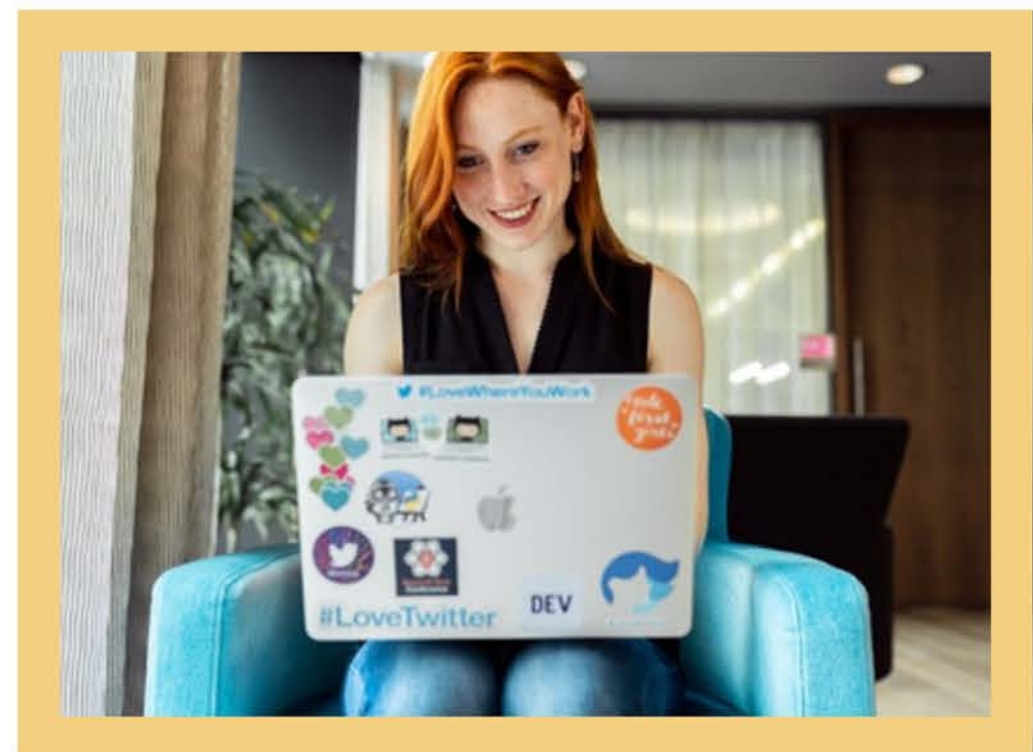
### Full-time (4 weeks):

- Monday 2<sup>nd</sup> March 2026 - Friday 27<sup>th</sup> March 2026
- Monday 15<sup>th</sup> June 2026 - Friday 10<sup>th</sup> July 2026
- Monday 7<sup>th</sup> September 2026 - Friday 2<sup>nd</sup> October 2026

## Further Information:

If you would like any further information about our CELTA courses, or would just like to have an informal chat about the course, please contact the course director and we will be happy to discuss any questions you might have:

[lewis.richards@lsi-portsmouth.co.uk](mailto:lewis.richards@lsi-portsmouth.co.uk)



**LSI PORTSMOUTH**  
**International House**  
Portsmouth